

Accessories

For Pressure Gauges

Technical Data Sheet



Description

Accessories for pressure gauges.



AM

Pressure Dampener

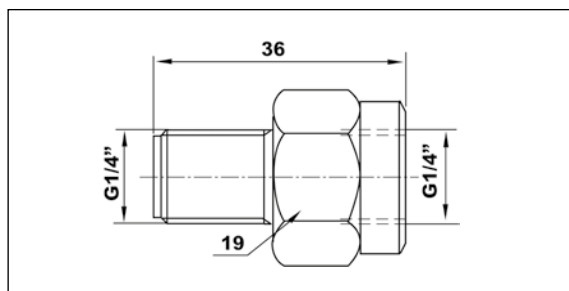
Part No.	Connection	Weight (kg)	Box / Master	Min. order
PZ010000	G1/4B	0.060	1/1	1
PZ020000	G3/8B	0.060	1/1	1
PZ030000	G1/2B	0.060	1/1	1

Features

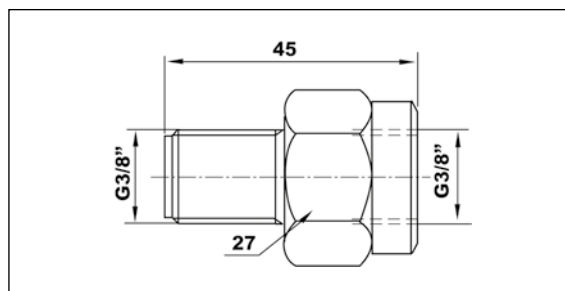
Materials	
Body	Cu-alloy
Thread Connection	Cu-alloy male-female

Overall dimensions (mm)

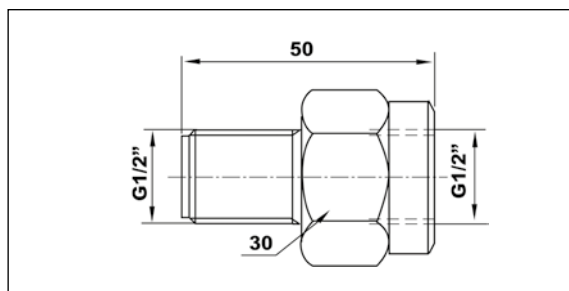
AM 1/4



AM 3/8



AM 1/2





403/RF

Ball valve with test flange.

Part No.	Connection	Weight (kg)	Box / Master	Min. order
403R14	G1/4B	0.200	1/1	1
403R38	G3/8B	0.200	1/1	1
403R12	G1/2B	0.200	1/1	1

Features

Materials

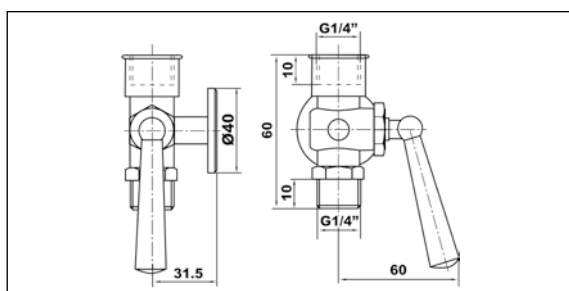
Body	Cu-alloy, three-way
Thread connection	Cu-alloy male-female
Test flange	Cu-alloy, DN40

Technical features

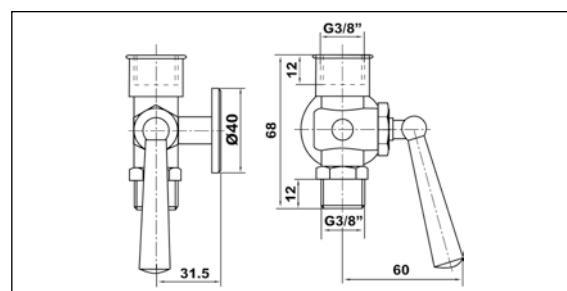
Temperature limits	Max. 100°C
Working pressure	PN 16 max

Overall dimensions (mm)

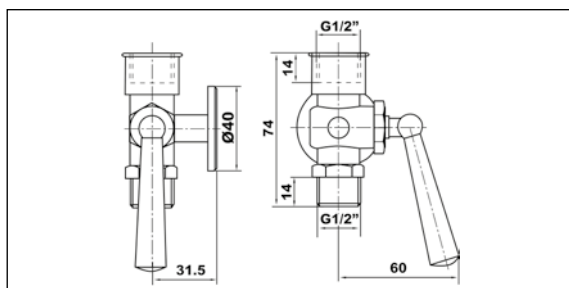
403/RF 1/4



403/RF 3/8



403/RF 1/2





RS

Ball valve.

Part No.	Connection	Weight (kg)	Box / Master	Min. order
PZ132000	G1/2B	0.130	1/1	1
0335015	G1/2B	0.13	1/1	1

Features

Materials

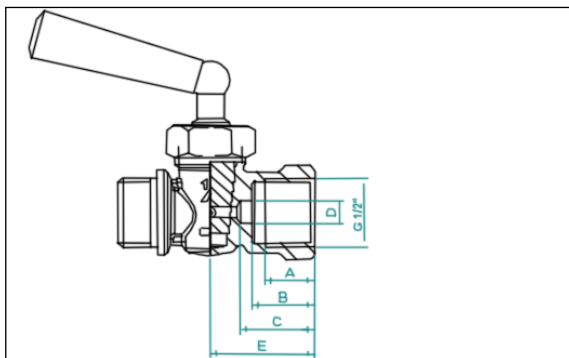
Body	Cu-alloy, two-way
Thread connection	Copper alloy, male - female (PZ132000), female - female (0335015)

Technical features

Temperature limits	Max. 40°C
Working pressure	PN 5 max

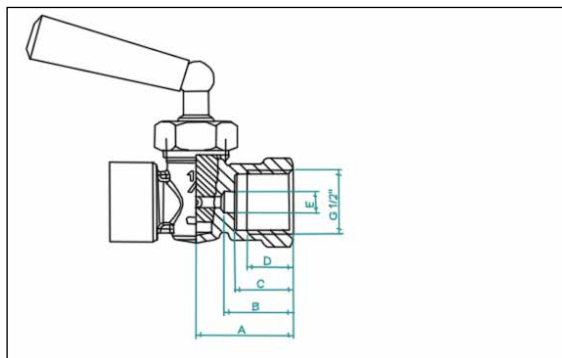
Overall dimensions (mm)

PZ132000



PZ132000	
Dimension	mm
A	15
B	19
C	22,5
D	7
E	31,5

0335015



0335015	
Dimension	mm
A	31,5
B	22,5
C	19
D	15
E	7



RFX

Stainless steel manual shut off valve with test flange.

Part No.	Connection	Weight (kg)	Box / Master	Min. order
PZ11010000	G1/4B	1.120	1/1	1
PZ12010000	G3/8B	1.120	1/1	1
PZ13010000	G1/2B	1.120	1/1	1

Features

Materials

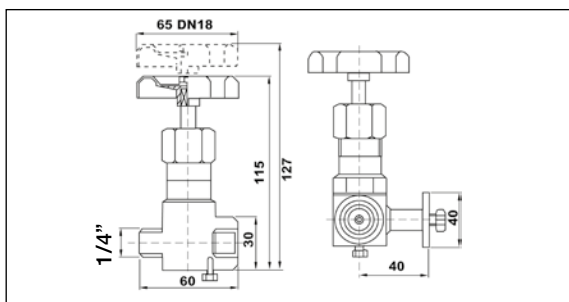
Body	Stainless steel AISI 316L, three-way
Thread connection	Stainless steel, male-female
Test flange	Stainless steel, DN40

Technical features

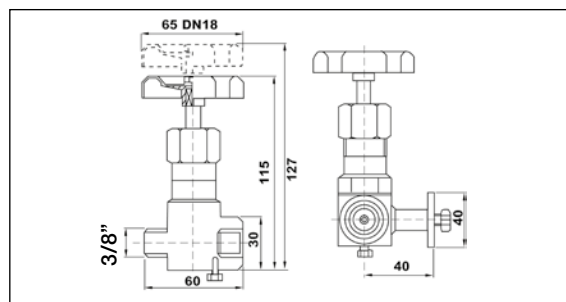
Temperature limits	Max. 220°C
Working pressure	PN 210 max

Overall dimensions (mm)

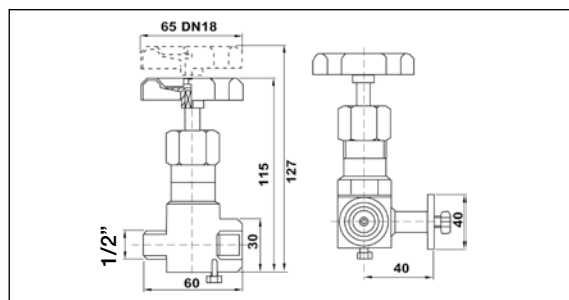
RFX 1/4



RFX 3/8



RFX 1/2



407D/SRN

Copper nickel-plated syphon (trumpet form).



Part No.	Connection	Weight (kg)	Box / Master	Min. order
407D14	G1/4B	0.090	1/1	1
407D38	G3/8B	0.090	1/1	1
407D12	G1/2B	0.090	1/1	1

Features

Materials

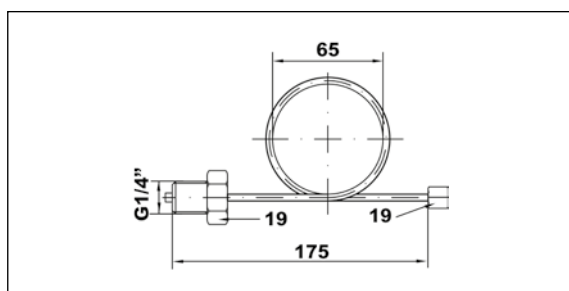
Tube	Copper, nickel-plated
Thread connection	Copper, nickel-plated, male-female

Technical features

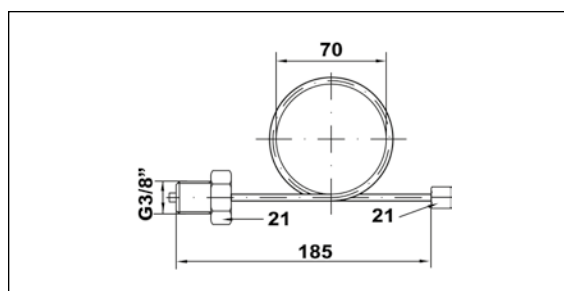
Temperature limits	Max. 120°C
Working pressure	PN 25 max

Overall dimensions (mm)

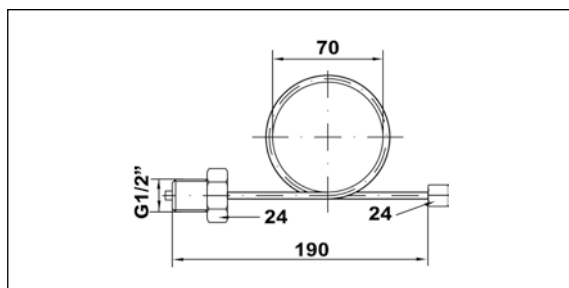
407D/SRN 1/4



407D/SRN 3/8



407D/SRN 1/2





SRX

Stainless steel syphon (trumpet form).

Part No.	Connection	Weight (kg)	Box / Master	Min. order
PZ141000000	G1/4B	1.011	1/1	1
PZ16100000	G1/2B	1.011	1/1	1

Features

Materials

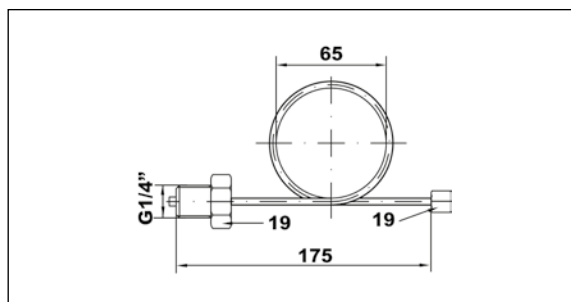
Tube	Stainless steel AISI316L
Thread connection	Stainless steel AISI 316L, male-female

Technical features

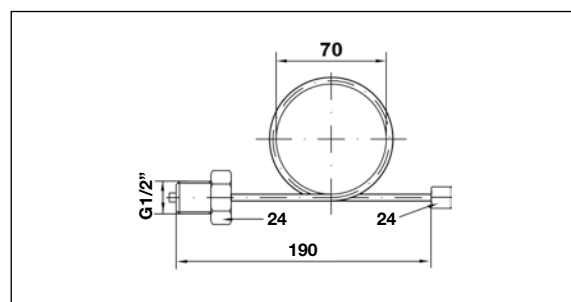
Temperature limits	Max. 200°C
Working pressure	PN 100 max

Overall dimensions (mm)

SRX 1/4



SRX 1/2





RP

Push button valve.

Part No.	Connection	Weight (kg)	Box / Master	Min. order
PZ111000	G1/4B	0.220	1/1	1
PZ121000	G3/8B	0.220	1/1	1
PZ131000	G1/2B	0.220	1/1	1

Features

Materials

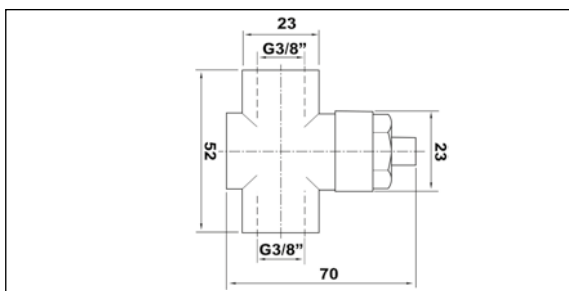
Body	Cu-alloy, nickel-plated with button for pressure release
Thread connection	Cu-alloy, nickel-plated, male-female

Technical features

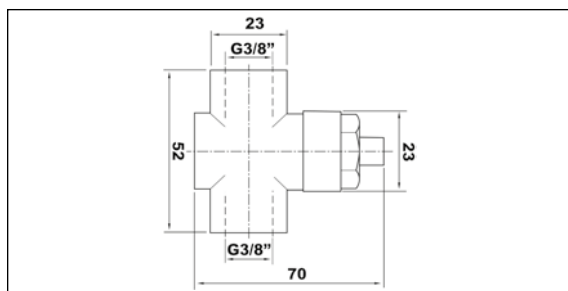
Temperature limits	Max. 80°C
Working pressure	PN 4 max

Overall dimensions (mm)

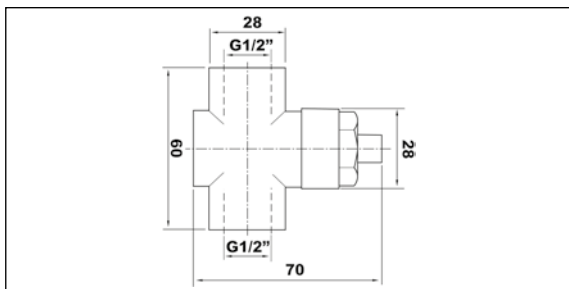
RP 1/4



RP 3/8



RP 1/2





VR

Automatic valve.

Part No.	Connection	Weight (kg)	Box / Master	Min. order
0329008	G1/4B x G1/4B	0.100	1/1	1
0329010	G3/8B x G3/8B	0.100	1/1	1
PZ04000D00	G1/2B x G1/4B	0.100	1/1	1
0329015	G1/2B x G1/2B	0.100	1/1	1

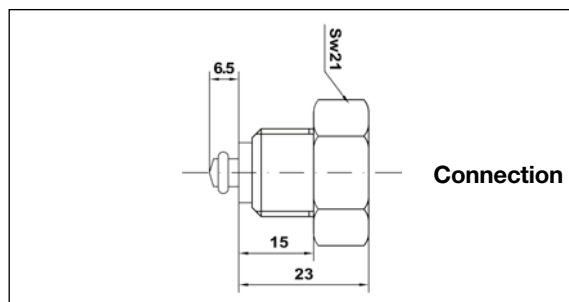
Features

Materials	
Body	Brass-polypropylene combination, 21 mm flats
Thread connection	Cu-alloy, with O-ring, male-female

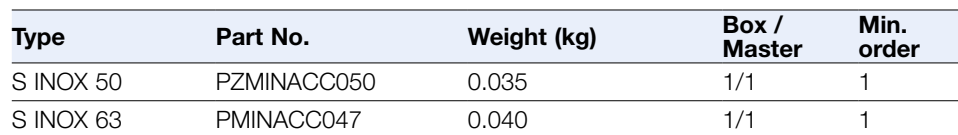
Technical features	
Temperature limits	Max. 120°C
Working pressure	PN 10 max

Overall dimensions (mm)

VR

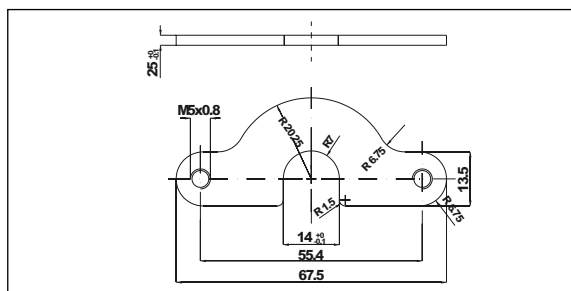


Mounting bracket for MG3A-INOX 50/63.



Materials	
U-clamp and fixing screws	zinc-plated steel

S INOX 50



Technical drawing of a mechanical part, showing two views: a top view (left) and a front view (right).

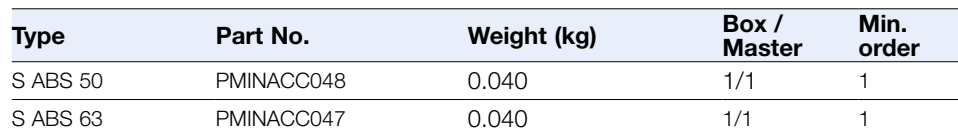
Top View Dimensions:

- Overall width: 70
- Overall height: 25.5
- Inner width: 82.6
- Inner height: 21
- Flange thickness: 2
- Flange height: 30

Front View Dimensions:

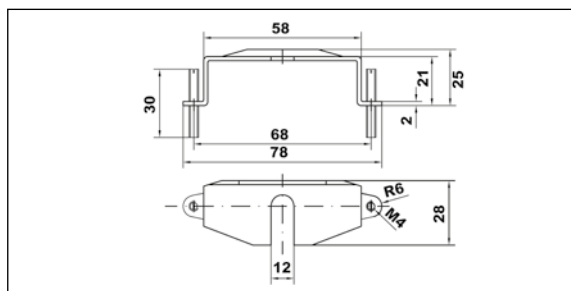
- Overall width: 97
- Overall height: 27
- Bottom flange width: 12
- Top flange width: 12
- Top flange height: 2
- Top flange thickness: 2
- Top flange radius: R6
- Top flange chamfer: M4

Mounting bracket for MG3A-ABS 50/63.



Materiali	
U-clamp and fixing screws	Zinc-plated steel

S ABS 50



The technical drawing shows two views of a mechanical component:

- Front View (Top):** A U-shaped profile with a central rectangular section and two side flanges. Dimensions include a total width of 70, a central width of 82.6, and a total height of 25.5. The side flanges have a thickness of 2 and a height of 21.
- Top View (Bottom):** A plan view showing the component's footprint. It features a central slot with a width of 12. The overall length is 97, and the distance from the centerline to the outer edge is 30. The corners are rounded with a radius of R6. There are also dimensions of 27 and 12 indicated.



F ABS 63

3-hole front flange for MG3A-ABS 63.

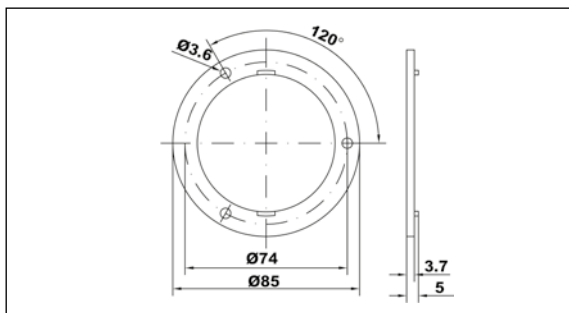
Part No.	Weight (kg)	Box / Master	Min. order
PMINABS048	0.003	1/1	1

Features

Materials	
Flange	Black plastic

Overall dimensions (mm)

F ABS 63



CP

Protective rubber cap for gauges M1/M3A-ABS 63

Part No.	Connection	Weight (kg)	Box / Master	Min. order
PCUSGOM001	Bottom entry	0.060	1/1	1
PCUSGOM002	Centre back entry	0.060	1/1	1

Features

Materials	
Materials	Black rubber



The descriptions and photographs contained in this product specification sheet are supplied by way of information only and are not binding.
Watts Industries reserves the right to carry out any technical and design improvements to its products without prior notice. Warranty: All sales and contracts for sale are expressly conditioned on the buyer's assent to Watts terms and conditions found on its website at www.watts.eu. Watts hereby objects to any term, different from or additional to Watts terms, contained in any buyer communication in any form, unless agreed to in a writing signed by an officer of Watts.



Watts Industries Italia S.r.l.
Via Brenno, 21 • 20853 Biassono (MB) • Italy
Tel. +39 039 4986.1
infowattsitalia@wattswater.com • www.watts.eu