

# WHOF1

Self-cleaning filter

## Technical Data Sheet



Description

**WHOF1 Series** self-cleaning filter for water with backwashing system for the effective removal of sediment. Suitable for all OneFlow® models.



WHOF1

1" FF BSPP plastic head connection. Drain funnel with backflow prevention system, in accordance with UNI EN 1717. Accessories included: wall bracket with screws and wrench; O-ring lubricant.

Type	Part no.	DN	Description	Net weight
WHOF1	WHOF1	1" ff*	Self-cleaning filter for OneFlow ® - 390x120x107 mm	1 Kg

*\*Included in the package of adapters for 3/4" and 1 1/4" connections.*

Technical specifications	
Max. operating temperature	45°C (113° F)
Min. operating temperature	4°C (39.2° F)
Max. operating pressure	8 bar (116 psi)
Min. operating Pressure	1.8 bar (26 psi)
Max. flow rate	6000 l/h

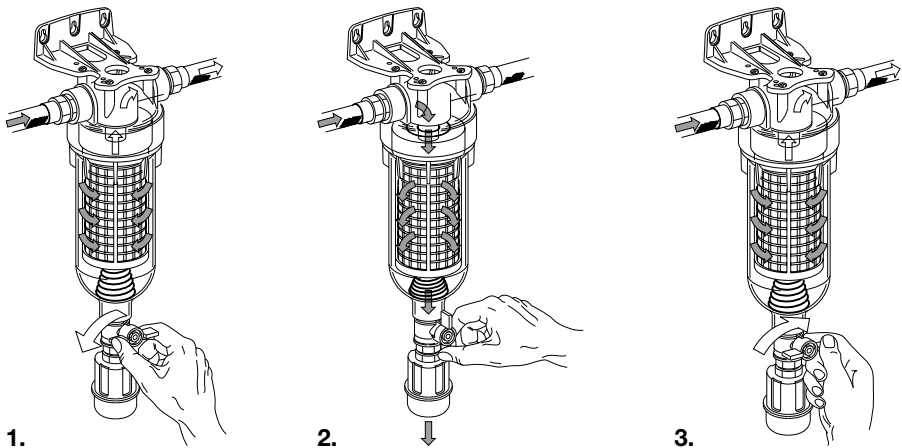
  

Materials	
Container	Transparent PET
Head	(PP-reinforced)
O-ring	EPDM
Cartridge	90 micron stainless steel mesh included

Backwashing

- Backwashing can be activated manually by opening the drain valve.
- When the filter element is clogged, it can be cleaned by simply opening the valve at the bottom of the housing (figure 1).
  - This generates a vacuum in the filter, which pushes the cartridge down and automatically reverses the flow of water from the inside to the outside (reverse flow) of the cartridge (figure 2). This reverse flow of water picks up particles and debris deposited on the cartridge and conveys them to the drain outlet.
  - Closing the valve restores the initial pressure distribution, and the internal spring returns the cartridge to its operating position (figure 3).

For installation and maintenance operations, see the specific manual.

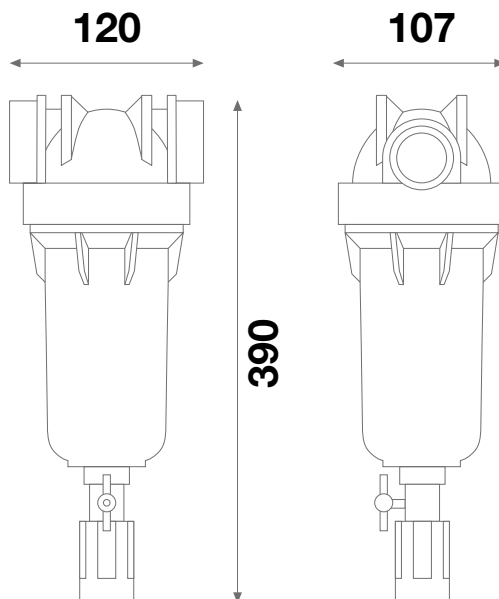


## Certifications

Complies with the requirements of Italian ministerial decrees 25/2012 and 174/2004, and has ACS certification.

## Overall dimensions (mm)

### WHOF1



## Specification text

### **WHOF1 Series**

**WHOF1 Series** self-cleaning filter - WATTS brand - for water with backwashing system for the effective removal of sediment. Suitable for all OneFlow® models\*. Backwashing is activated manually by opening the drain valve. Transparent PET container. Reinforced polypropylene head. 90 micron stainless steel mesh filter included. Drain funnel with backflow prevention system. Max. operating temperature: 45°C (113°F). Min. operating temperature: 4°C (39.2° F). Max. operating pressure: 8 bar (116 psi). Accessories included: wall bracket with screws and wrench. \* 1" F/F head connection. Pack includes adapters for 3/4" and 1 1/4" connections.



**Watts Industries Italia S.r.l.**

Via Brenno, 21 • 20853 Biassono (MB) • Italy  
Tel. +39 039 4986.1 • Fax +39 039 4986.222  
infowattsitalia@wattswater.com • www.watts.eu