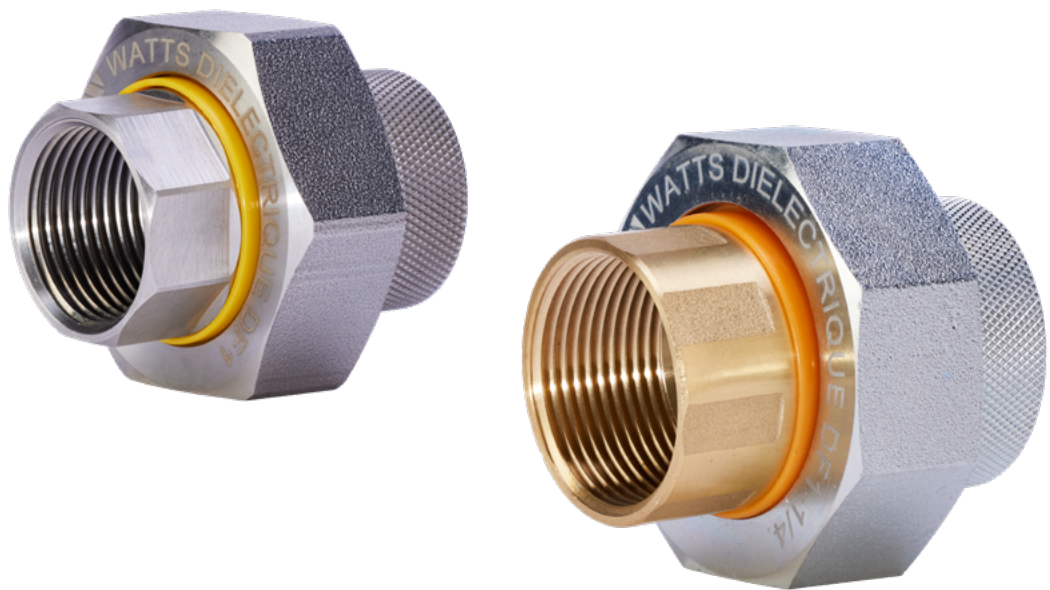


ISO RID Series

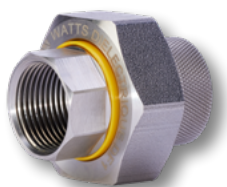
Dielectric unions for drinking water installations

Technical Data Sheet



Description

UBA-compliant (German Environment Agency) ISO-RID series dielectric unions are specially developed for use in drinking water installations and offer reliable protection against galvanic corrosion. Depending on the version, these dielectric unions are either made entirely of stainless steel or a combination of stainless steel and brass. The threaded connections are optionally available in internal/internal or external/internal thread version. Each dielectric union is supplied with an EPDM seal and an HD-PE insulator.



ISO-RID VA-VA dielectric union

Dielectric union made of stainless steel to prevent galvanic corrosion in systems with various metallic materials, max. temperature 110 °C, max. pressure 16 bar, UBA-compliant.

| Type | | Part no. | Weight | PU |
|-----------------------------------|-----|----------|---------|------|
| Internal thread - internal thread | | | | |
| ISO-RID IG-IG | ½" | 10088723 | 0.22 kg | 1/50 |
| ISO-RID IG-IG | ¾" | 10088724 | 0.30 kg | 1/50 |
| ISO-RID IG-IG | 1" | 10088725 | 0.40 kg | 1/25 |
| ISO-RID IG-IG | 1¼" | 10088727 | 0.60 kg | 1/15 |
| ISO-RID IG-IG | 1½" | 10088729 | 1.34 kg | 1/10 |
| ISO-RID IG-IG | 2" | 10088730 | 1.88 kg | 1/6 |
| Internal thread - external thread | | | | |
| ISO-RID IG-AG | ½" | 10088721 | 0.17 kg | 1/60 |
| ISO-RID IG-AG | ¾" | 10088722 | 0.23 kg | 1/50 |



ISO-RID VA-MS dielectric union

Dielectric union made of stainless steel and brass to prevent galvanic corrosion in systems with various metallic materials, max. temperature 110 °C, max. pressure 16 bar, UBA-compliant.

| Type | | Part no. | Weight | PU |
|-----------------------------------|-----|----------|--------|------|
| Internal thread - internal thread | | | | |
| ISO-RID IG-IG | ½" | 10088760 | - | 1/50 |
| ISO-RID IG-IG | ¾" | 10088761 | - | 1/50 |
| ISO-RID IG-IG | 1" | 10088762 | - | 1/25 |
| ISO-RID IG-IG | 1¼" | 10088763 | - | 1/15 |
| ISO-RID IG-IG | 1½" | 10088764 | - | 1/10 |
| ISO-RID IG-IG | 2" | 10088765 | - | 1/6 |
| Internal thread external thread | | | | |
| ISO-RID IG-AG | ½" | 10088766 | - | 1/60 |
| ISO-RID IG-AG | ¾" | 10088767 | - | 1/50 |

Approvals

The current UBA Declaration of Conformity is available on our website in the "Approvals" section at <https://www.watts.eu/de/technical-support/approvals>.

The UBA (German Environment Agency) defines hygienic requirements for products used with drinking water.

Why use dielectric unions?

What happens if you don't use a dielectric union?

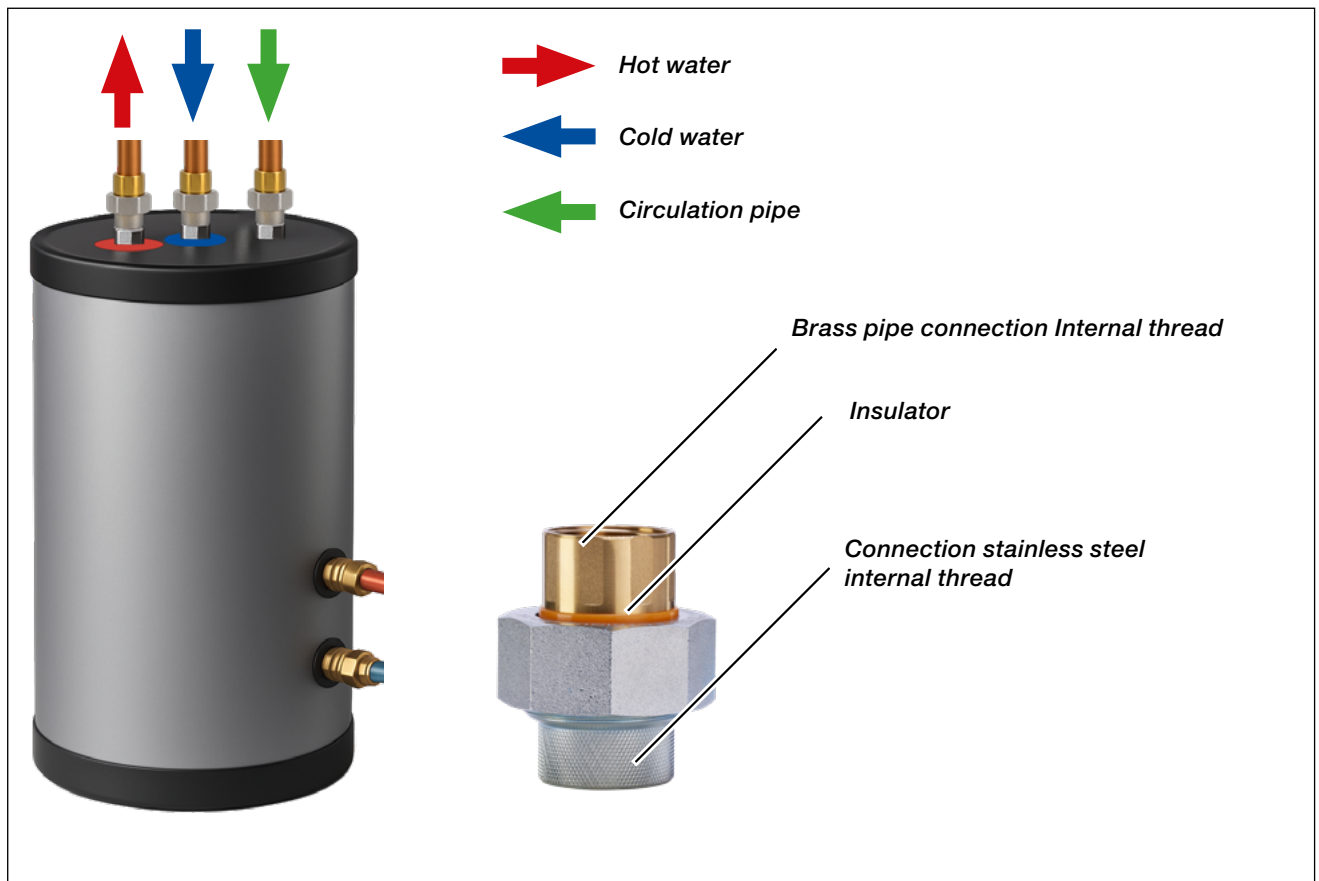
The combination of different metallic materials in contact with water creates a galvanic element, which results in a current flow through a chemical reaction. As a result, the less noble metal becomes the anode and decomposes (galvanic corrosion). The use of dielectric unions insulates/separates the different metallic materials from each other. This means that there is no conductive connection and galvanic corrosion is prevented.

They are used to prevent galvanic corrosion between different metallic materials when using drinking water connections to drinking water storage tanks, instant water heaters or heat exchangers. This extends the service life of the sacrificial anode and the storage tank or the appliances used!

Furthermore, attention must also be paid to the arrangement of the metals in the direction of flow. Base metals should be installed before more noble metals. (e.g. steel before copper).

Application example

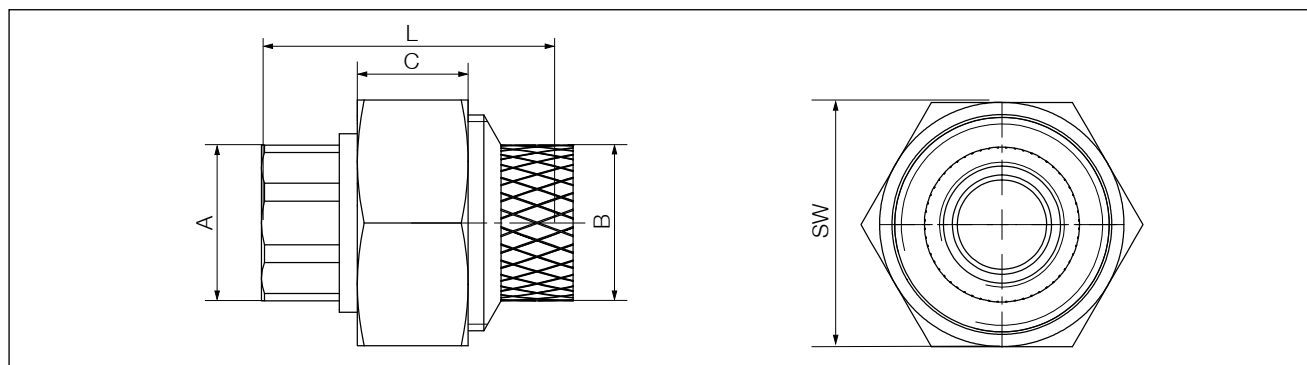
Dielectric unions connect brass pipes and stainless steel pipes to hot water storage tanks, for example at the connections for hot water, cold water and circulation.



Technical data

| Hydraulic data | |
|-----------------------|---|
| Max. temperature | 110 °C |
| Max. pressure | 16 bar |
| Materials | |
| Housing | Stainless steel (ISO RID VA-VA) Stainless steel / brass CW511N (ISO RID VA-MS) |
| Gasket | EPDM |
| Separator / insulator | HD-PE ring |

Overall dimensions [mm]



| Type | Part no. | | A | B | C | L | SW |
|---------------|----------|----------|-----------------|-----------------|------|------|------|
| | VA-VA | VA-MS | Internal thread | Internal thread | [mm] | [mm] | [mm] |
| ISO-RID IG-IG | 10088723 | 10088760 | G ½ | G ½ | 18,5 | 52 | 41 |
| ISO-RID IG-IG | 10088724 | 10088761 | G ¾ | G ¾ | 20 | 56 | 48 |
| ISO-RID IG-IG | 10088725 | 10088762 | G 1 | G 1 | 22 | 62,5 | 58 |
| ISO-RID IG-IG | 10088727 | 10088763 | G 1¼ | G 1¼ | 24,5 | 69,5 | 70 |
| ISO-RID IG-IG | 10088729 | 10088764 | G 1½ | G 1½ | 26,5 | 70,5 | 89 |
| ISO-RID IG-IG | 10088730 | 10088765 | G 2 | G 2 | 30 | 78 | 102 |
| | VA-VA | VA-MS | Internal thread | External thread | | | |
| ISO-RID IG-AG | 10088721 | 10088766 | G ½ | G ½ B | 18,5 | 55 | 36 |
| ISO-RID IG-AG | 10088722 | 10088767 | G ¾ | G ¾ B | 18,5 | 60 | 41 |

Specification texts

ISO-RID VA-MS IG IG dielectric union

WATTS dielectric union made of stainless steel and brass, for preventing galvanic corrosion in systems with various metallic materials. Internal thread on both sides. Dimensions: ½" (part no. 10088723), ¾" (10088724), 1" (10088725), 1¼" (10088727), 1½" (10088729), 2" (10088729). Max. temperature: 110 °C Pressure rating: PN 16.

ISO-RID VA-MS IG AG dielectric union

WATTS dielectric union made of stainless steel and brass, for preventing galvanic corrosion in systems with various metallic materials. Internal thread (stainless steel) external thread (brass). Dimensions: ½" (part no. 10088721), ¾" (10088722). Max. temperature: 110 °C. Pressure rating: PN 16.

ISO-RID VA-VA IG IG dielectric union

WATTS stainless steel dielectric union, for preventing galvanic corrosion in systems with various metallic materials. Internal thread on both sides. Dimensions: ½" (part no. 10088760), ¾" (10088761), 1" (10088762), 1¼" (10088763), 1½" (10088764), 2" (10088765). Max. temperature: 110 °C. Pressure rating: PN 16.

ISO-RID VA-VA IG AG dielectric union

WATTS stainless steel dielectric union, for preventing galvanic corrosion in systems with various metallic materials. Internal thread (stainless steel), external thread (brass). Dimensions: ½" (part no. 10088766), ¾" (10088767). Max. temperature: 110 °C. Pressure rating: PN 16.

The descriptions and photographs contained in this product specification sheet are supplied by way of information only and are not binding. Watts Industries reserves the right to carry out any technical and design improvements to its products without prior notice.

Warranty: All sales and contracts for sale are expressly conditioned on the buyer's assent to Watts terms and conditions found on its website at www.watts.eu/en/gtc. Watts hereby objects to any term, different from or additional to Watts terms, contained in any buyer communication in any form, unless agreed to in a writing signed by an officer of Watts.



Watts Industries Deutschland GmbH

Godramsteiner Hauptstr. 167 • 76829 Landau • Deutschland

Telefon: +49 6341 9656-0 • Fax: +49 6341 9656-560

E-Mail: WIDE@wattswater.com • www.watts.eu/de