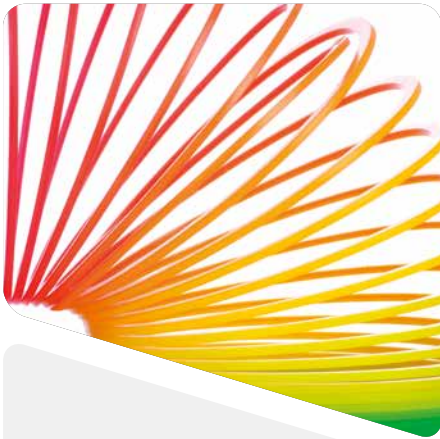


Microflex[®] System

Pre-insulated flexible pipes





Versatile system for customised solutions

Since 1994, Microflex has been synonymous with experience and expertise in the development and optimisation of systems using **ultra-flexible pre-insulated pipes**. Microflex is a system of pre-insulated flexible pipes for fluid transport in centralised **heating and cooling** systems and for water transport in **plumbing systems**, both for individual residential units and for large district heating networks.

The wide range of available **accessories** allows for the creation of underground joints and branches, inspectable connections, threaded and flanged outlets with or without wall penetrations, and watertight penetrations.

Insulation

Closed-cell cross-linked polyethylene foam, insulating and with low water absorption, resistant to ageing.
 $\lambda=0.0372 \text{ W/mK}$ at 40°C.
CFC-free.

Flexibility

Reduced bending radii and installation times. Supplied by the metre or in 100m rolls.

Strength

High-density polyethylene sheath with a double-wall corrugated structure.

Lightweight

Easy to handle and install.

Installation efficiency

No need for fittings or fasteners at obstacles.

Environmental compatibility

Lower energy consumption and reduced CO2 emissions. Products free from pollutants (CFCs). Production with reduced environmental impact.

10-year warranty

Made in Italy

Complies with EN ISO 15875



All-in-one for heat pumps



The new **Microflex HP** is the ideal solution for the installation of **monobloc heat pumps**. The intelligent design of Microflex HP combines the supply and return pipes for heating and/or cooling with two conduits for power and network cables within the same outer sheath. The cables are neatly arranged and can be replaced easily and safely thanks to the integrated conduits.

The result is a **comprehensive and flexible product** with high-quality insulation properties.

One colour, one application

Centralised heating and cooling

Pre-insulated flexible pipe with a single inner PEX-a SDR11 tube featuring an oxygen barrier (DIN 4726) for fluids at temperatures ranging from -10°C to 95°C and pressures up to 6 bar. Multi-layer thermal insulation made of CFC-free closed-cell expanded polyethylene. Double-walled corrugated outer sheath in high-density polyethylene (PE-HD). Supplied cut to length. Maximum length 100m.

MICROFLEX UNO

From \varnothing 25x2,3 to 125x11,4.

MICROFLEX DUO

From \varnothing 25x2,3 to 63x5,8.



Central heating and cooling and plumbing system

Pre-insulated flexible piping with four internal PEX-A tubes:

- two SDR11 pipes with an oxygen barrier (DIN 4726) for fluids at temperatures from -10°C to 95°C and pressures up to 6 bar
- two SDR7.4 pipes for water up to 95°C and pressures up to 10 bar

MICROFLEX QUADRO

Heating: from \varnothing 25x2,3 to 40x3,7.

Domestic water: from \varnothing 18x2,5 to 40x5,5.



Heat pump

Pre-insulated flexible piping for connecting monobloc heat pumps with 4 internal pipes:

- 2 PEX-a SDR11 pipes with oxygen barrier (DIN 4726)
- 2 electrical conduits for routing the power and control cables for the heat pump

MICROFLEX HP

Heating: from \varnothing 25x2,3 to \varnothing 50x4,6.

Electrical conduits: from diameter (in/out) 25/18,8 mm to 40/32.



Plumbing systems

Pre-insulated flexible pipe with a single inner PEX-a SDR7.4 tube for water up to 95°C and pressures up to 10 bar.

MICROFLEX UNO

From \varnothing 22x3,0 to 110x15,1.

MICROFLEX DUO

From \varnothing 18x2,5 to 63x8,7.





Always in stock

Delivered to site in rolls or by the metre

Flexible installation with low installation costs

Energy savings

Long-lasting performance

Supplied cut to size

Cold drinking water and cooling

MICROFLEX COOL HEATING CABLE

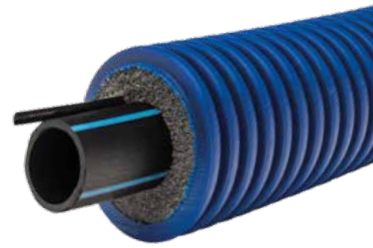
Pre-insulated flexible pipe with self-regulating heating cable (10 W/m) with a single inner PE-HD SDR11 pipe, for drinking water up to 25°C and pressures up to 16 bar. From \varnothing 32x2.9 to 125x11.4.

MICROFLEX COOL ONE

Pre-insulated flexible pipe with a single inner PE-HD SDR11 pipe for drinking water up to 25°C and pressures up to 16 bar. From \varnothing 32x2.9 to 125x11.4.

MICROFLEX COOL DUO

Pre-insulated flexible pipe with a pair of PE-HD SDR11 inner tubes for drinking water up to 25°C (other fluids -10°C to 25°C) and pressures up to 16 bar. From \varnothing 32x2.9 to 63x5.8.



Fittings and accessories

- Installation even in hard-to-reach areas
- No special tools required
- Durable
- Wide range of threaded fittings for creating connections
- Insulated rigid casings and inspection chambers
- Anchoring and waterproofing system
- Pipe marking tapes

